



GMT MONTHLY MEMBERSHIP PROGRESS REPORT

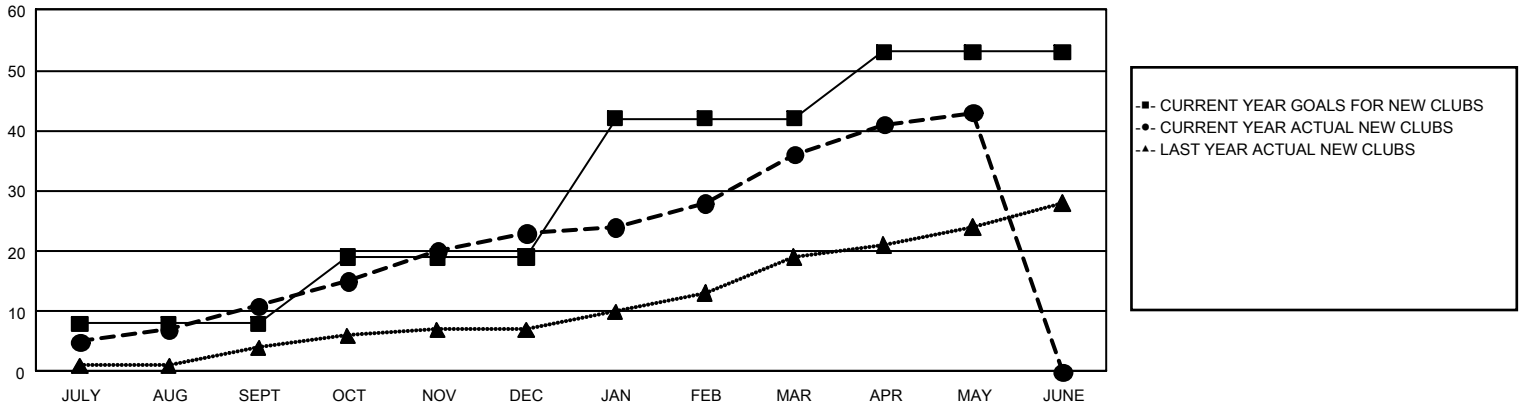
GAT Constitutional Area 5 - Japan

Results as of: 5/31/2026

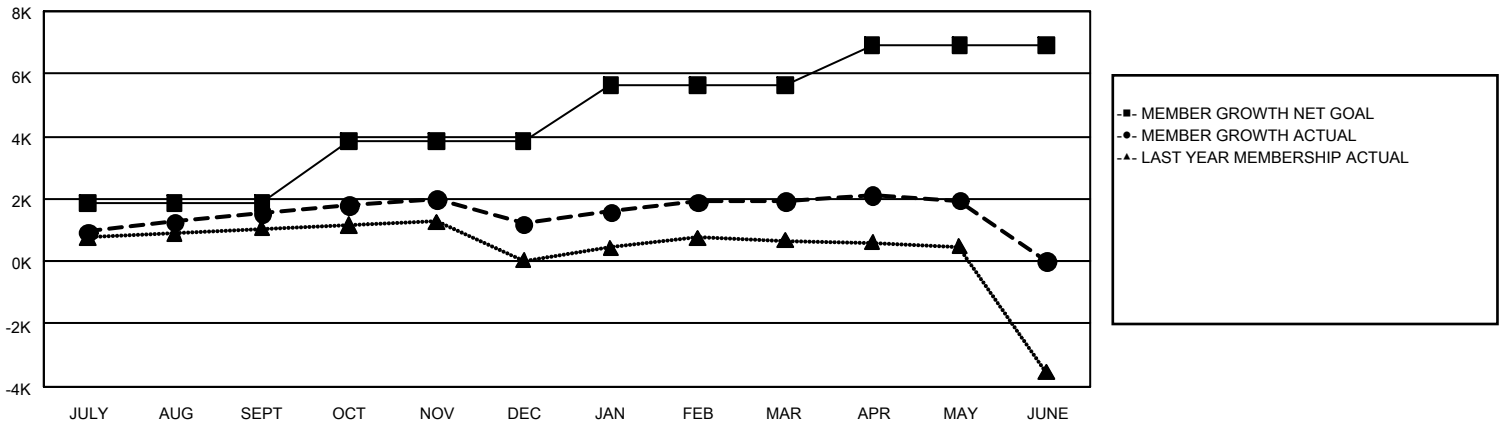
REPORT DOES NOT INCLUDE CLUBS IN UNDISTRICTED AREAS.

Clubs				Members			
RESULTS FOR 2025-2026				RESULTS FOR 2025-2026			
QUARTER	NEW CLUB GOAL	NEW CLUBS	DROPPED CLUBS	QUARTER	MEMBER GROWTH NET GOAL	MEMBER GROWTH ACTUAL	DROPPED MEMBERS ACTUAL (including transfers)
JULY/AUG/SEPT	8	11	4	JULY/AUG/SEPT	1,850	3,299	1,493
OCT/NOV/DEC	11	12	8	OCT/NOV/DEC	1,994	1,596	1,892
JAN/FEB/MAR	23	13	4	JAN/FEB/MAR	1,787	2,137	1,295
APR/MAY/JUNE	11	7	2	APR/MAY/JUNE	1,271	1,207	1,117

GOALS AND ACTUAL NEW CLUBS CUMULATIVE



GOALS AND ACTUAL MEMBERS CUMULATIVE



DROPPED CLUBS: 18	1,877 CLUBS OF 2,694 ADDED 1 OR MORE NEW MEMBERS	<u>GENDER DISTRIBUTION</u>	
<u>DROPPED MEMBERS</u>		MALE	70,933 (76.98%)
DECEASED	634	FEMALE	21,179 (22.98%)
CLUB CANCELLED	83	TOTAL FAMILY UNIT MEMBERS 24,501	
OTHER	5,072		
TOTAL	5,789		
CLICK HERE FOR CUMULATIVE MEMBERSHIP DATA		TOTAL FAMILY UNIT MEMBERS 24,501	
		FAMILY MEMBERS PAYING HALF DUES 13,623	